

# 3565 HAVEN AVE

## MENLO PARK, CA



- OFFICE R&D / LAB SPACE
- ±5,993 RSF AVAILABLE NOW

[WWW.3565HAVEN.COM](http://WWW.3565HAVEN.COM)



CUSHMAN &  
WAKEFIELD

PSAI REALTY PARTNERS  
COMMERCIAL REAL ESTATE

# 3565 HAVEN AVE

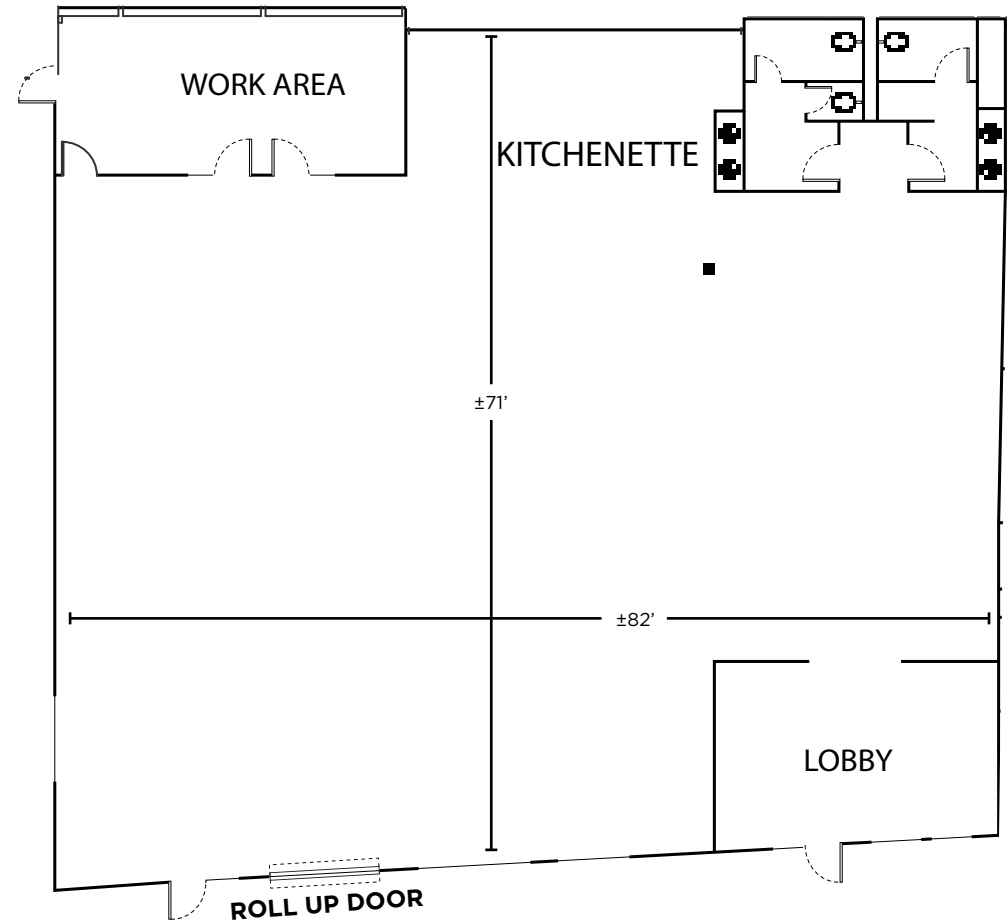
## MENLO PARK, CA 94025

### FLOOR PLAN

Suite 4 | ±5,993 SF  
Available Now

### PREMISE HIGHLIGHTS

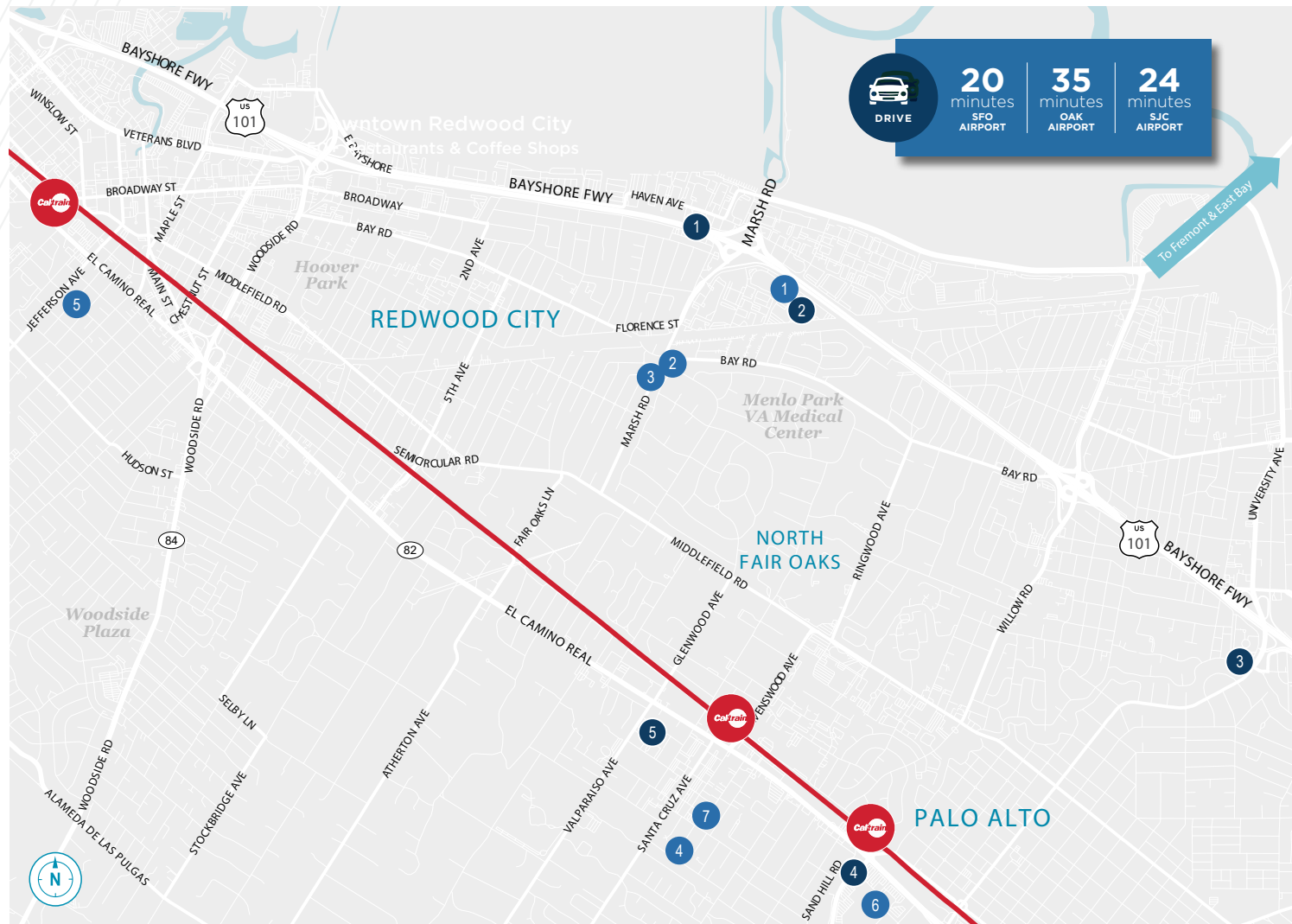
- Open Environment Perfect for Office, R&D or Lab
- 100% HVAC
- Skylights Provide Abundant Natural Light
- 18' 6" Ceiling Clear Height
- 200 Amps 3 Phase Power
- ±2.8/1000 Parking
- Grade Level Glass Door



[VIEW VIRTUAL TOUR HERE](#)

# 3565 HAVEN AVE MENLO PARK, CA 94025

## AMENITIES & DRIVE TIMES



### RETAIL

1. COFFEEBAR MENLO PARK - BAYFRONT
2. STARBUCKS
3. FREEWHEEL BREWING COMPANY
4. DRAEGER'S MARKET
5. WHOLE FOODS MARKET
6. STANFORD SHOPPING CENTER
7. TRADER JOE'S

### HOTELS

1. ANTON MENLO
2. HOTEL NIA
3. FOUR SEASONS HOTEL SILICON VALLEY AT EAST PALO ALTO
4. THE STANFORD PARK HOTEL
5. PARK JAMES

### Caltrain Route & Stops



**FOR MORE INFORMATION, CONTACT:**

**Steve Bouret**

Executive Managing Director  
+1 650 533 7300  
steve.bouret@cushwake.com  
LIC #01304628

**Chris Blom**

Director  
+1 650 931 2210  
chris.blom@cushwake.com  
LIC #02031205

1350 Bayshore Hwy., Suite 900  
Burlingame, CA  
Main : +1 650 347 3700  
Fax : +1 650 347 4307  
[cushmanwakefield.com](http://cushmanwakefield.com)

©2025 Cushman & Wakefield. All rights reserved. The information contained in this communication is strictly confidential. This information has been obtained from sources believed to be reliable but has not been verified. NO WARRANTY OR REPRESENTATION, EXPRESS OR IMPLIED, IS MADE AS TO THE CONDITION OF THE PROPERTY (OR PROPERTIES) REFERENCED HEREIN OR AS TO THE ACCURACY OR COMPLETENESS OF THE INFORMATION CONTAINED HEREIN, AND SAME IS SUBMITTED SUBJECT TO ERRORS, OMISSIONS, CHANGE OF PRICE, RENTAL OR OTHER CONDITIONS, WITHDRAWAL WITHOUT NOTICE, AND TO ANY SPECIAL LISTING CONDITIONS IMPOSED BY THE PROPERTY OWNER(S). ANY PROJECTIONS, OPINIONS OR ESTIMATES ARE SUBJECT TO UNCERTAINTY AND DO NOT SIGNIFY CURRENT OR FUTURE PROPERTY PERFORMANCE.

**WWW.3565HAVEN.COM**



**CUSHMAN &  
WAKEFIELD**

**PSAI REALTY PARTNERS**  
COMMERCIAL REAL ESTATE